



## INTRODUCTION TO THE INTERNATIONAL TREE FOUNDATION



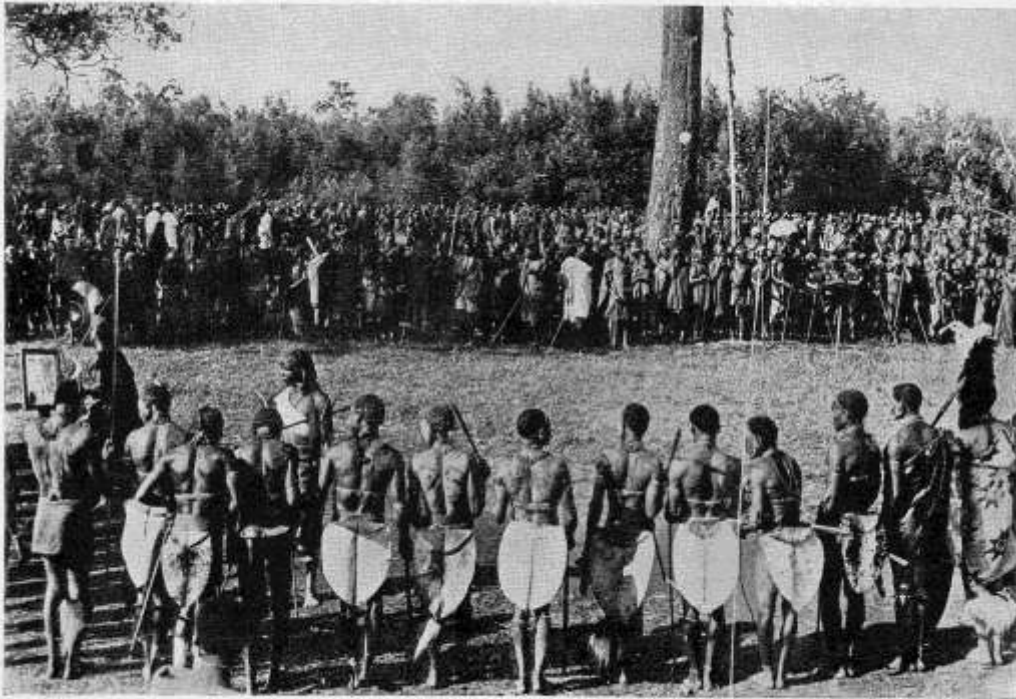
ORC Producers  
Conference  
January 2012





## ITF's Origins

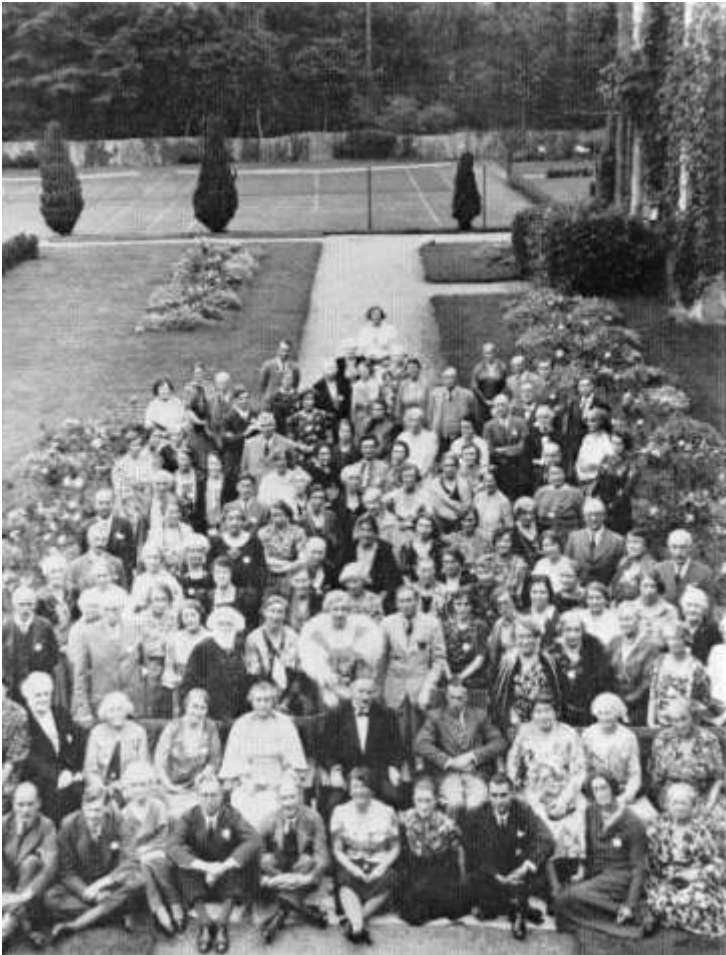
- 🌳 Founded as “Men of the Trees ”in 1922 by Richard St Barbe Baker



-- *The First Dance of the Men of the Trees* --  
When Over Three Thousand Warriors Assembled in the Author's Camp



## ITF's Origins



🌱 In its heyday,  
branches in over  
100 countries

🌱 26 trillion trees  
planted (?)






## ITF Today

- 🌱 Funding of tree planting projects in the UK and overseas, particularly in Africa
- 🌱 Advocacy and promotion of public awareness of global issues around deforestation, reforestation and agroforestry
- 🌱 Implementation of development projects, in partnership with local communities and international agencies, that apply and up-scale research outputs to enhance the livelihoods of the rural poor


# ITF Today

**1.6 billion people** worldwide depend on forests for their livelihoods.

**Of these 1.2 billion live in extreme poverty**



**When you help us save forests you help us save lives, **join us today****

International Tree Foundation 

**SAVE A TREE, SAVE A LIFE. JOIN US TODAY**

By supporting the International Tree Foundation you help us fund simple, sustainable schemes across the world, where trees are protecting the environment and preserving livelihoods.

As a supporter, your contribution will help a lot of this happen. We will also plant a tree in the UK on your behalf when you join us. You will also receive regular updates on news and events, and become part of a growing network of people who are all working for a greener, safer future.

**HELP US NOW BY VISITING**  
[www.internationaltreefoundation.org/donate](http://www.internationaltreefoundation.org/donate)  
 or complete the form below today and return it to us at:

The International Tree Foundation  
 Sandy Lane  
 Clowley Down  
 West Sussex  
 BN10 4HS  
[www.internationaltreefoundation.org](http://www.internationaltreefoundation.org)

---

**SUPPORT OUR WORK**

Adult (UK) £25       Concession rate (UK) £20  
 Adult (Overseas) £35       Student/young citizens  
 Junior (UK/Under 18) £16       Life £500



Name/s \_\_\_\_\_

Address \_\_\_\_\_

Postcode \_\_\_\_\_

Email \_\_\_\_\_ Telephone \_\_\_\_\_

I enclose a cheque payable to the International Tree Foundation for £ \_\_\_\_\_

**GIFT AID**  
 By completing the form below you will enable us to add 21p to every £1 you give, at no cost to you.

I am a UK taxpayer. Please treat all donations I make or have made to ITF for the past six years (but not before January 1st 2004) as Gift Aid donations.

Signature \_\_\_\_\_ Date \_\_\_\_\_

[www.internationaltreefoundation.org/donate](http://www.internationaltreefoundation.org/donate) 

# ITF and the World Agroforestry Centre (ICRAF)

**Memorandum of Understanding** (December 2011). 3 objectives:

- 🌱 Dissemination and promotion of research outputs and examples of best practice in agroforestry
- 🌱 Awareness raising amongst practitioners, researchers, students and the general public about the role of agroforestry in sustainable development
- 🌱 Capacity building of beneficiaries and other practitioners within community based agroforestry initiatives in the form of training, learning materials and mentoring

[ICRAF: International Centre for Research on Agroforestry, Nairobi, Kenya]